

**Neue Horizonte erschließen:  
WorldView Legion und Umbra  
Radardaten**

---

**Die ultimative Fusion für eine revolutionäre  
Erdbbeobachtung?**

EUROPE'S LEADER IN

# IMAGERY SOLUTIONS

---

- Maxar's EU counterpart. Trusted source for high quality data and expertise since 2002
- Customer base covers more than 1700 customers in 59 countries in Europe and North Africa. Each year we process 3500-4500 orders.
- Extensive network of innovative partners and regional distributors
- Dedicated multi-mission ground station at the German Aerospace Center (DLR)

SINCE 2002

# BRINGING CUTTING-EDGE SOLUTIONS TO EUROPE

We developed an infrastructure and workflows to meet the critical needs of the most-demanding customers.

Our adaptable business model and awareness of industry demands, allowed us to **introduce and later refine Near Real-Time (NRT) delivery technology to the European Market.**

## **Only European supplier who can:**

- Consistently deliver VHR imagery in under 30 minutes (since 2017)
- Process several < 30 min NRT orders in parallel **on a contractual basis**
- Striving **15 min NRT** VHR imagery orders



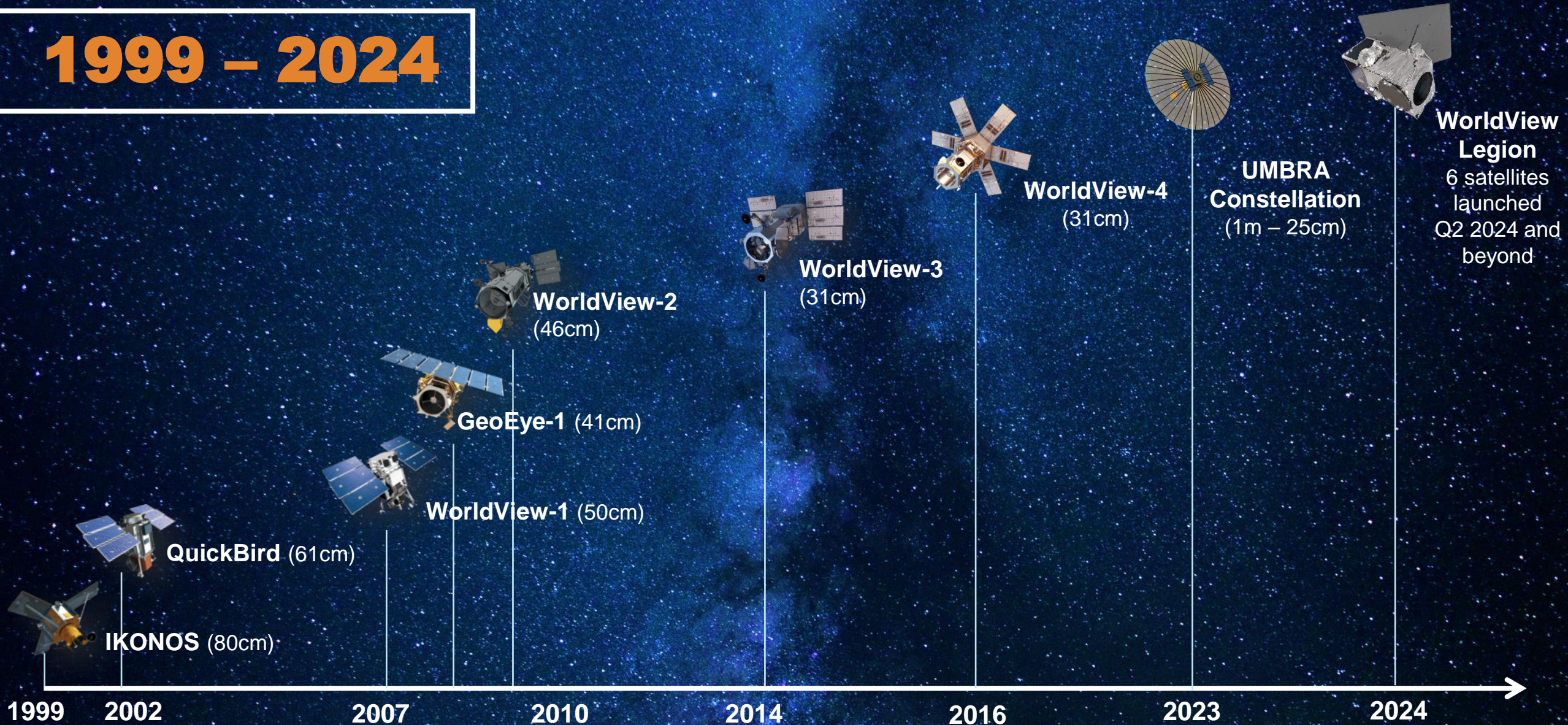
# REGIONAL PARTNERS





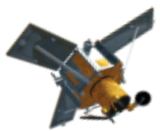
# SATELLITES

## 1999 – 2024

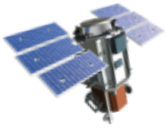




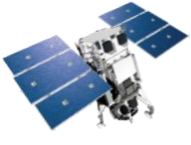
# Spatial Resolution



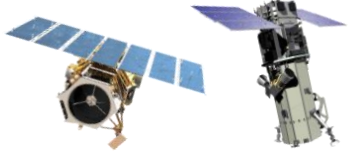
80 cm



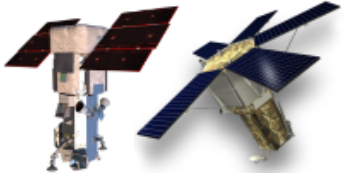
60 cm



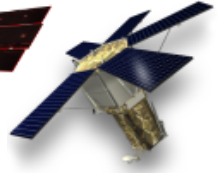
50 cm



40 cm



30 cm



15 cm HD



1999



2001



2007



2008/09



2014



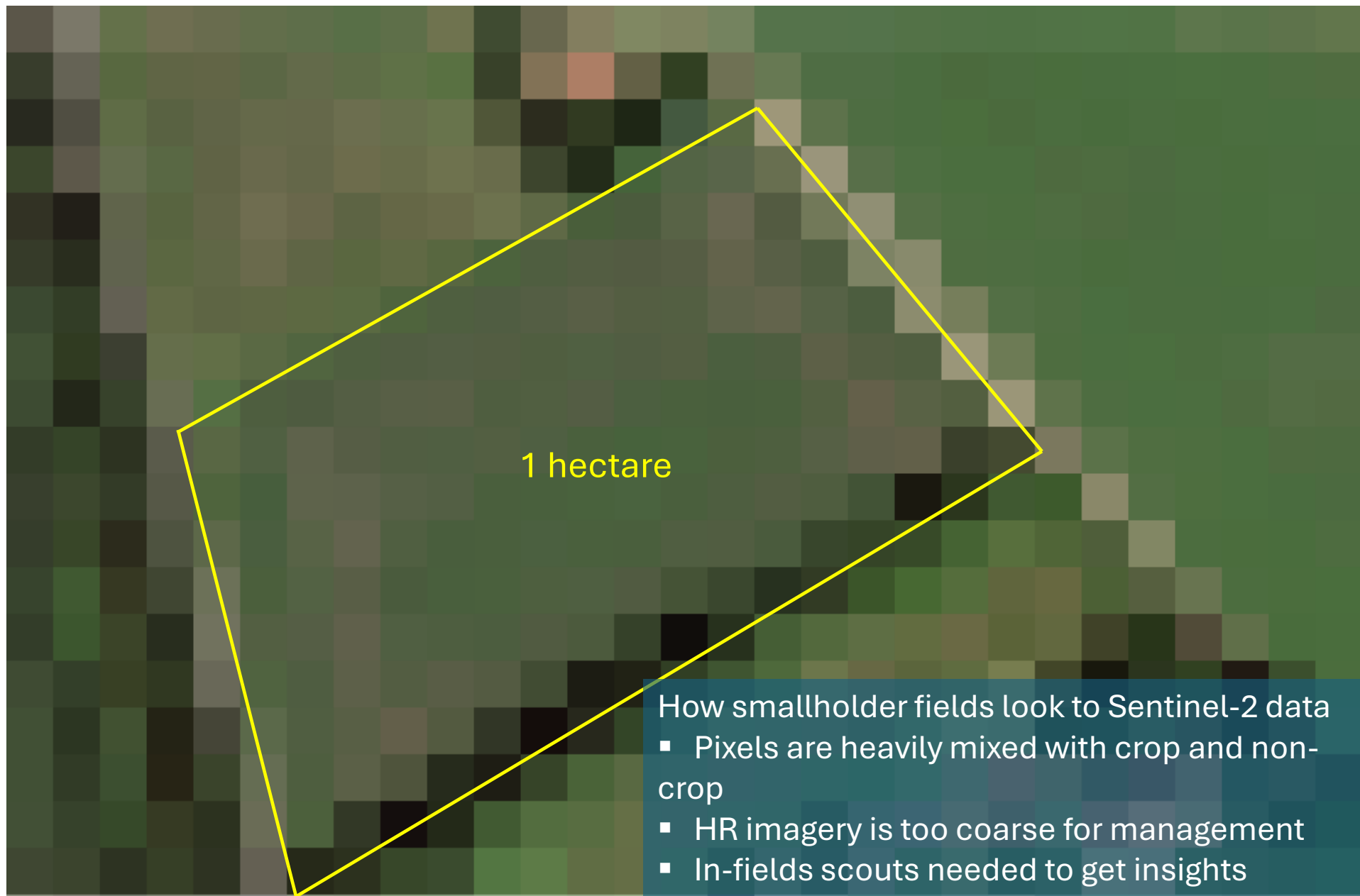
2020

# 10 M RESOLUTION



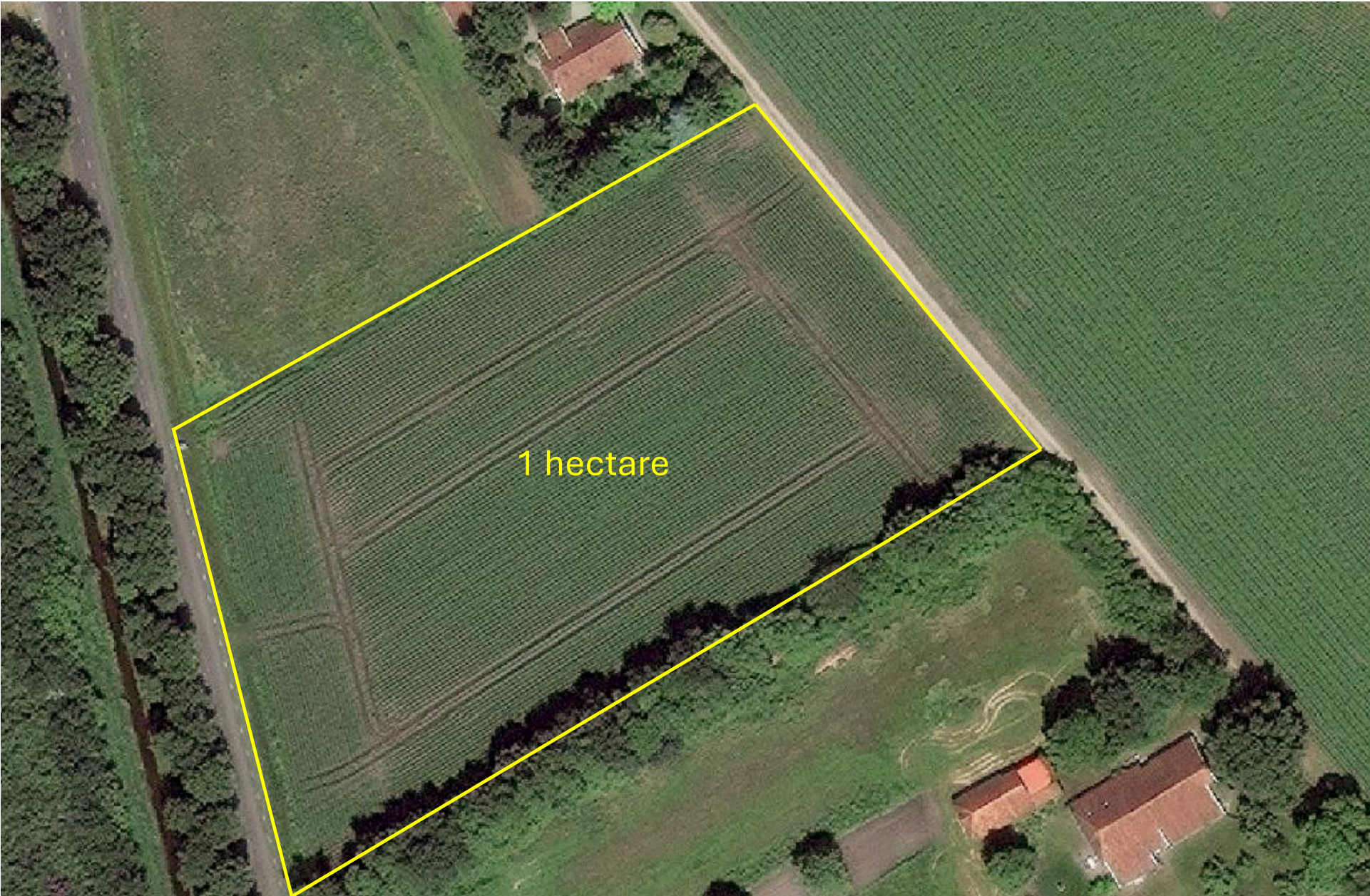
Boutange, Netherlands | June 18, 2017 | WorldView-4

# 10 M RESOLUTION





# 30 CM RESOLUTION





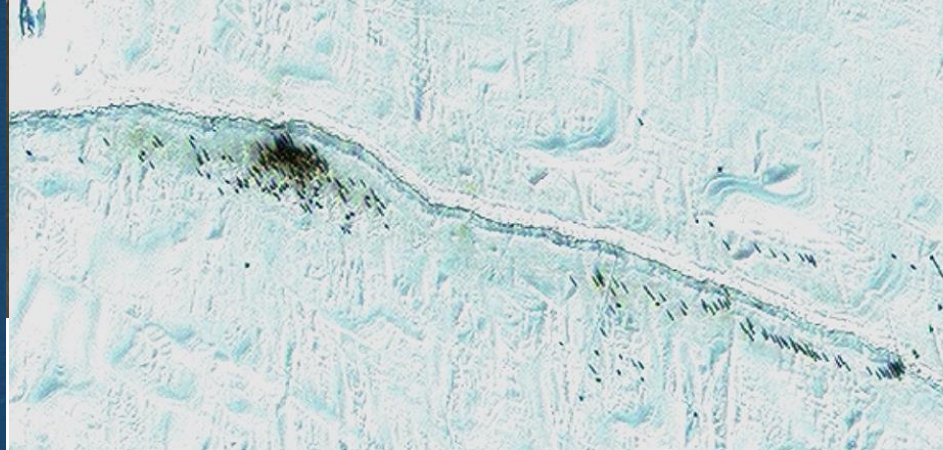
# Berliner Zoo











# WHAT IS HD?

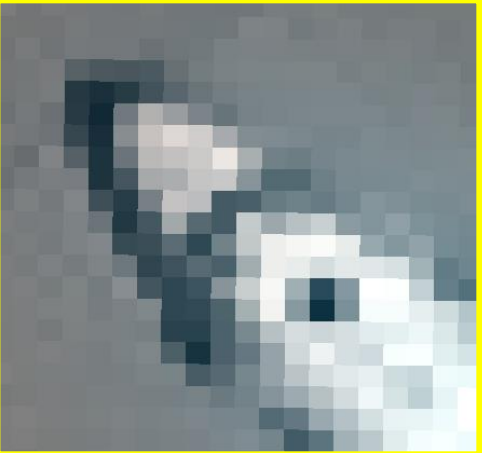
---

- A technique that improves the visual clarity of an image.
- The image is aesthetically refined with precise edges and well reconstructed details.
- It enables faster and more accurate data extraction from images collected by our satellite constellation.



**Always check native sensor resolution vs product GSD**





An-26 CURL



30cm



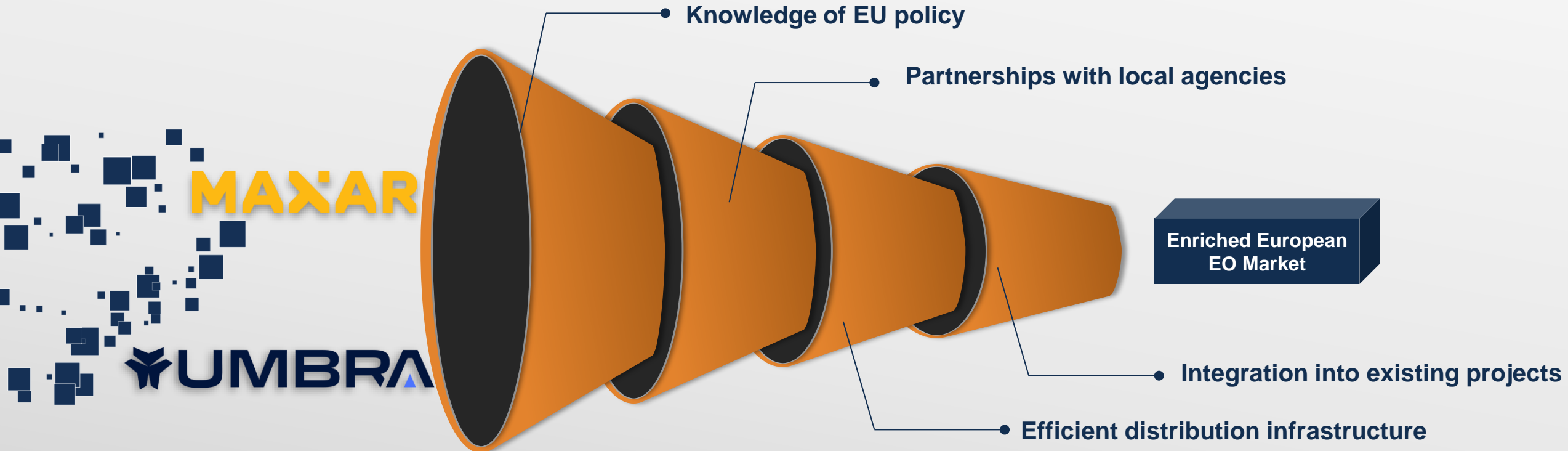
15cm HD

EUSI FUNNEL OF

# NEW TECHNOLOGY

In the rapidly changing space-based remote sensing industry, startups and satellites are launching faster than you can count... And they aren't all European.

EUSI is adapting to this dynamic to bring the best solutions to the European market in a way that benefits EU policies and regional EO objectives.



2<sup>ND</sup> OF MAY 2024  
**LEGION 1 & 2**





WORLDVIEW LEGION

# THE FUTURE OF EARTH OBSERVATION

**6** New Satellites

**30<sub>cm</sub>** Resolution

**15** Daily Collections

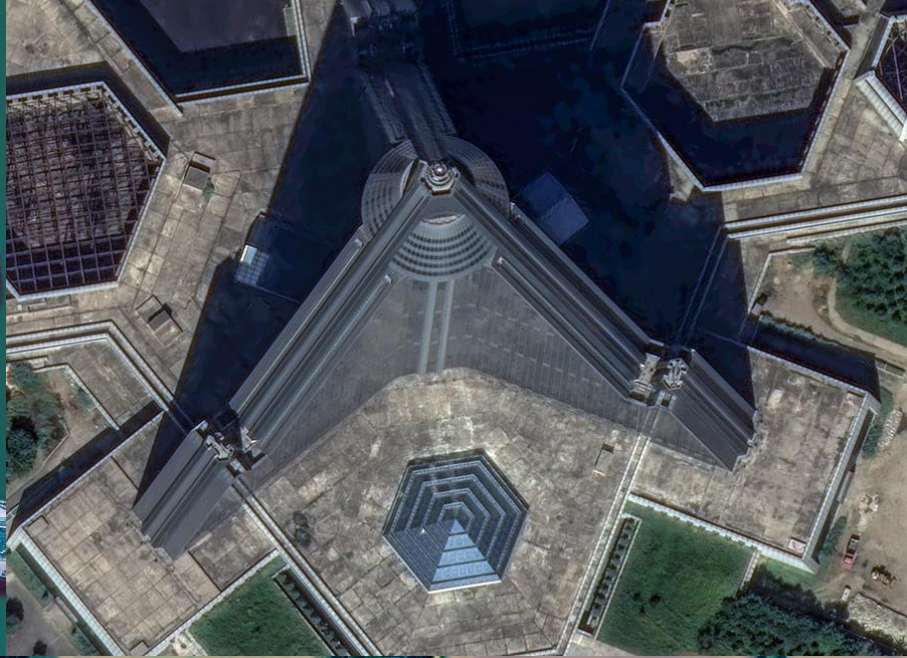
**8** Multispectral Bands



## SEVASTOPOL

LG4	7:05
LG4	8:44
WV2	10:13
LG1	10:21
GE1	10:26
LG2	11:07
WV3	11:08
LG6	11:45
LG6	13:25
WV1	13:27
LG6	15:03
LG3	16:27
LG3	18:07
LG3	19:47







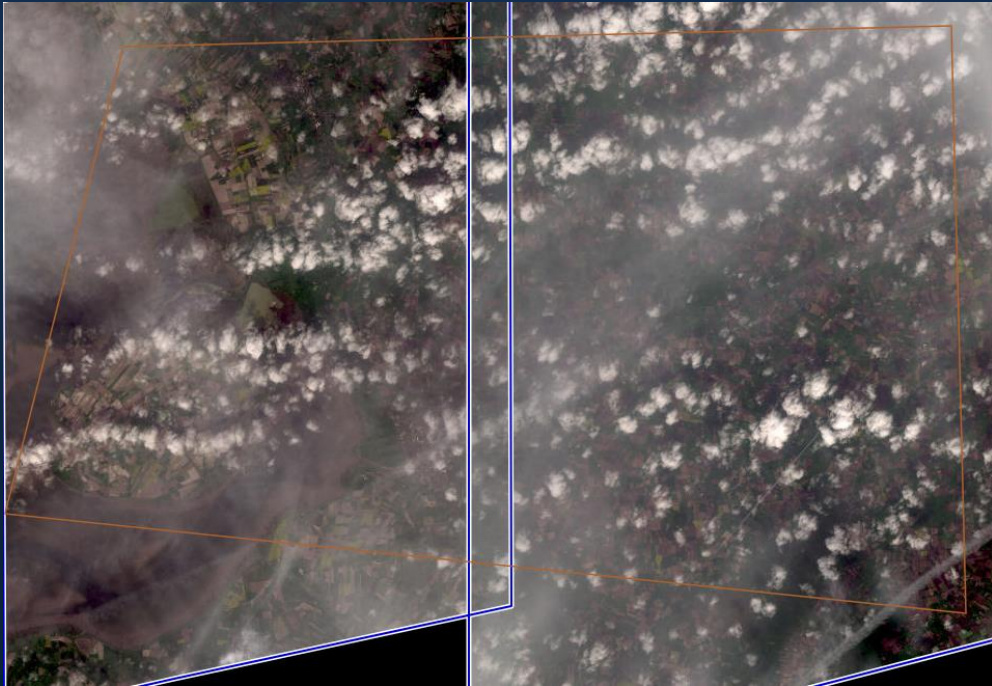
# BIGGEST UNCERTAINTY FOR A SUCCESSFUL ACQUISITION OF AN OPTICAL SATELLITE IMAGE ?

---



# BIGGEST UNCERTAINTY FOR A SUCCESSFUL ACQUISITION OF AN OPTICAL SATELLITE IMAGE ?

---



**ZEUSI**

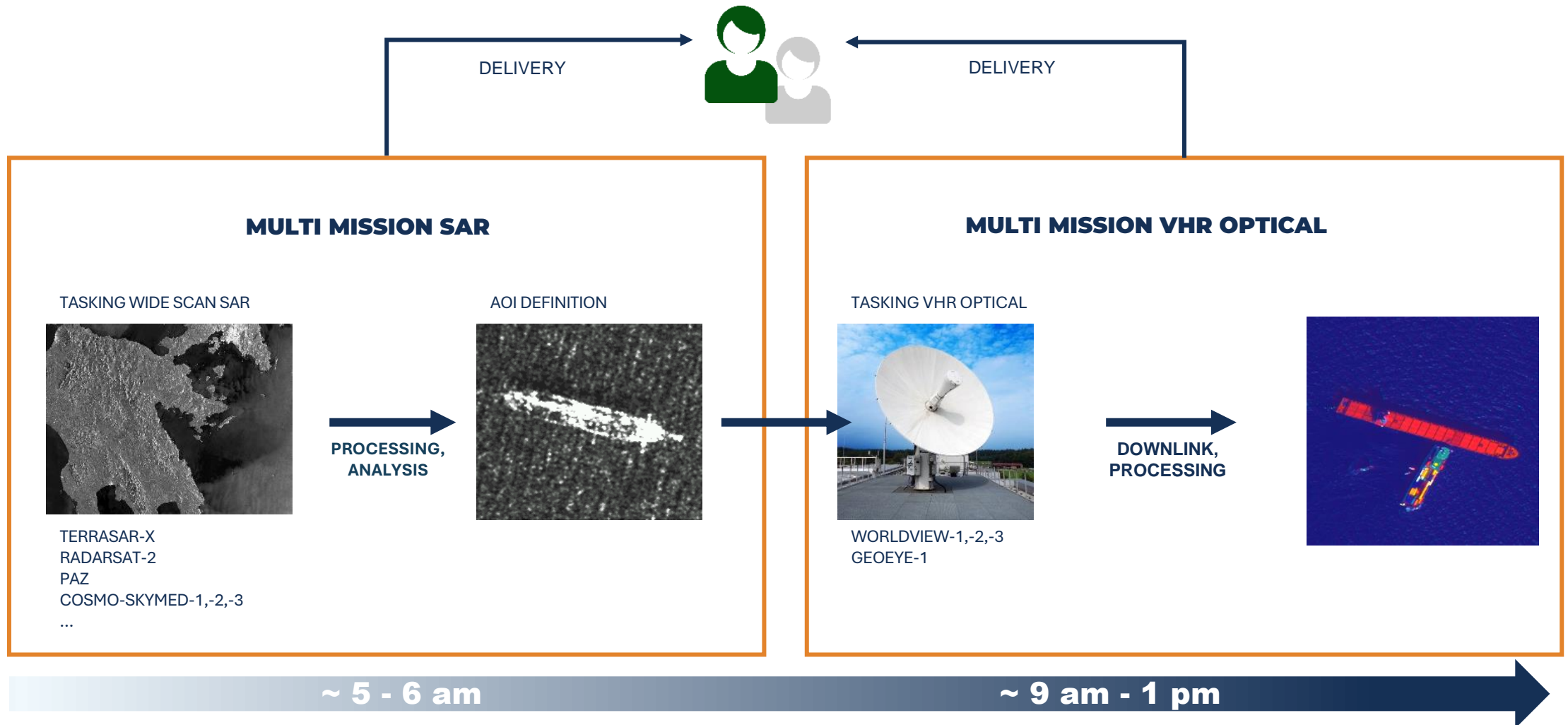


**UMBRA**



# TIPPING & CUEING

Local tasking and innovative partnerships allows us to support flexible concepts such as tip & cue.

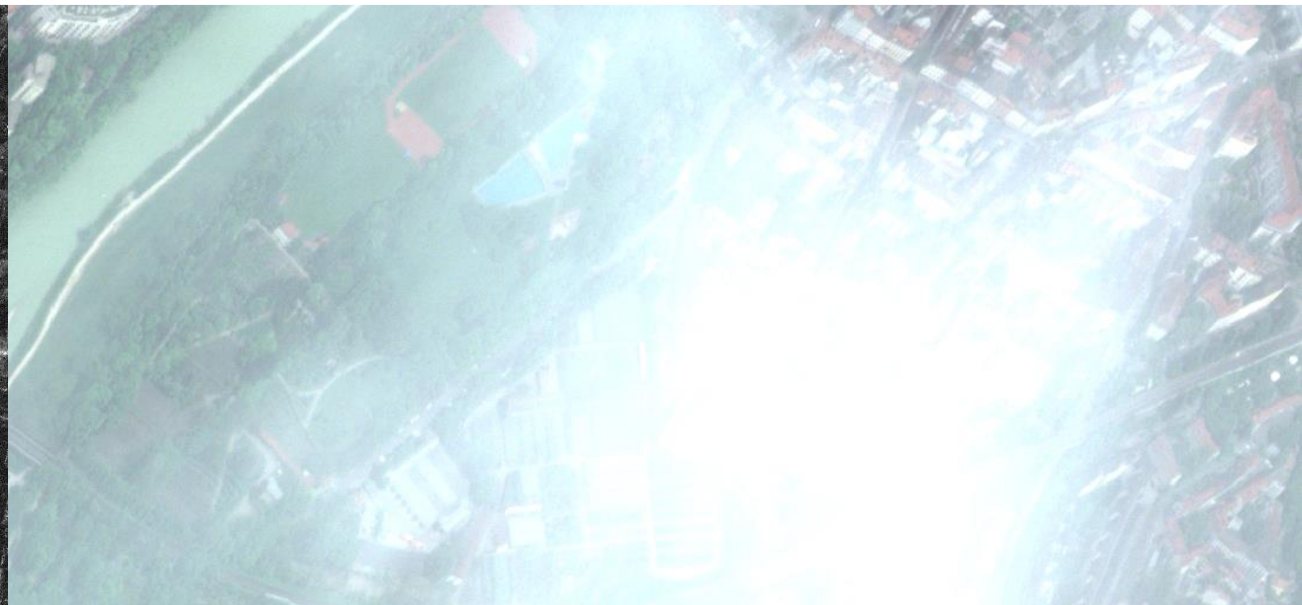
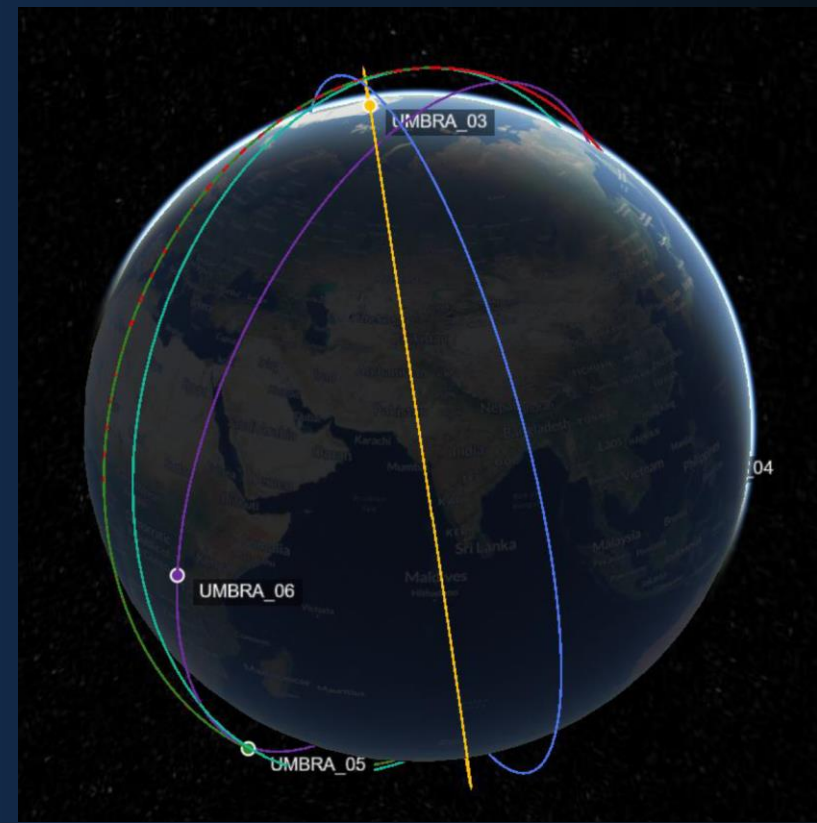
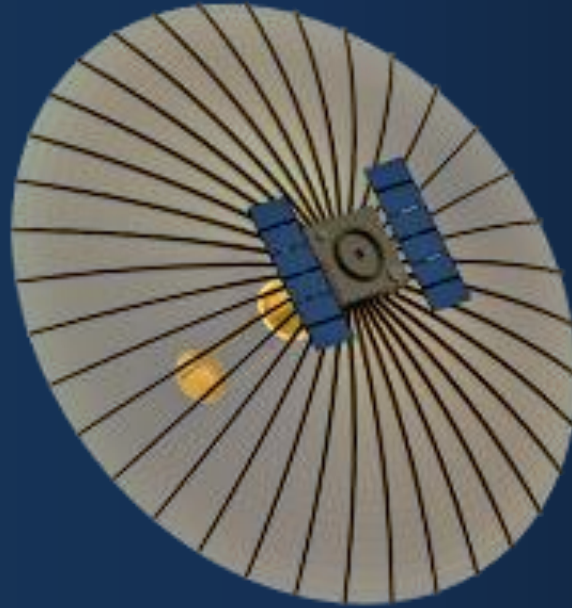




SYNTHETIC APERTURE RADAR

# UMBRA SAR

- X-Band, Spotlight resolution 25cm
- 5km x 5km or 10km x 10km scene
- License CC-BY 4.0
- Self-service direct tasking
- Secured tasking and fast deliveries





SYNCHRONIZED

# DOUBLESHOT

Famagusta, Cyprus

12 Feb 2024 | 08:19 UTC

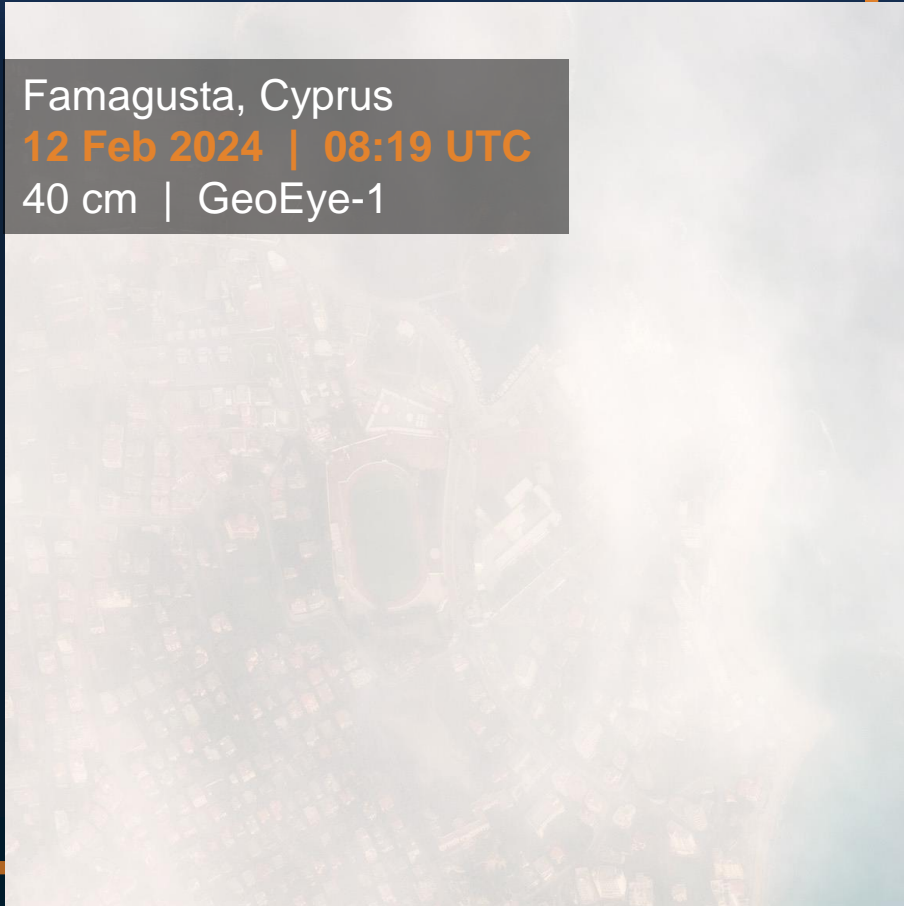
40 cm | GeoEye-1

Famagusta, Cyprus

12 Feb 2024 | 08:28 UTC

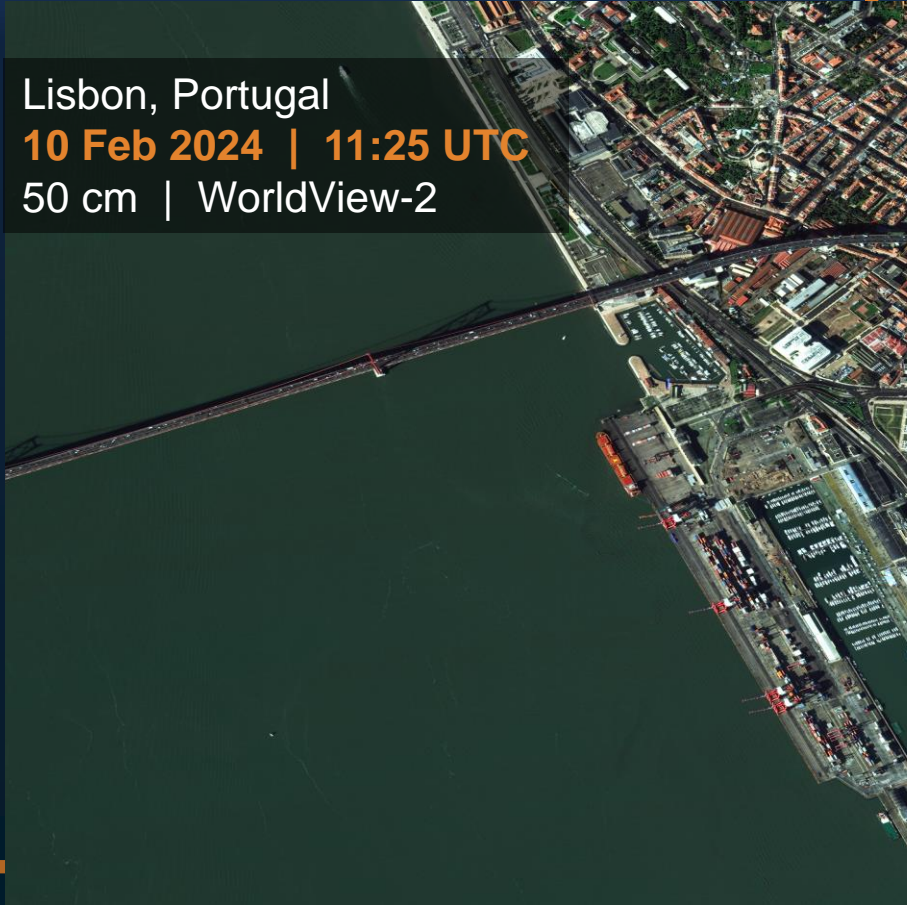
50 cm | Umbra 05

11 MIN



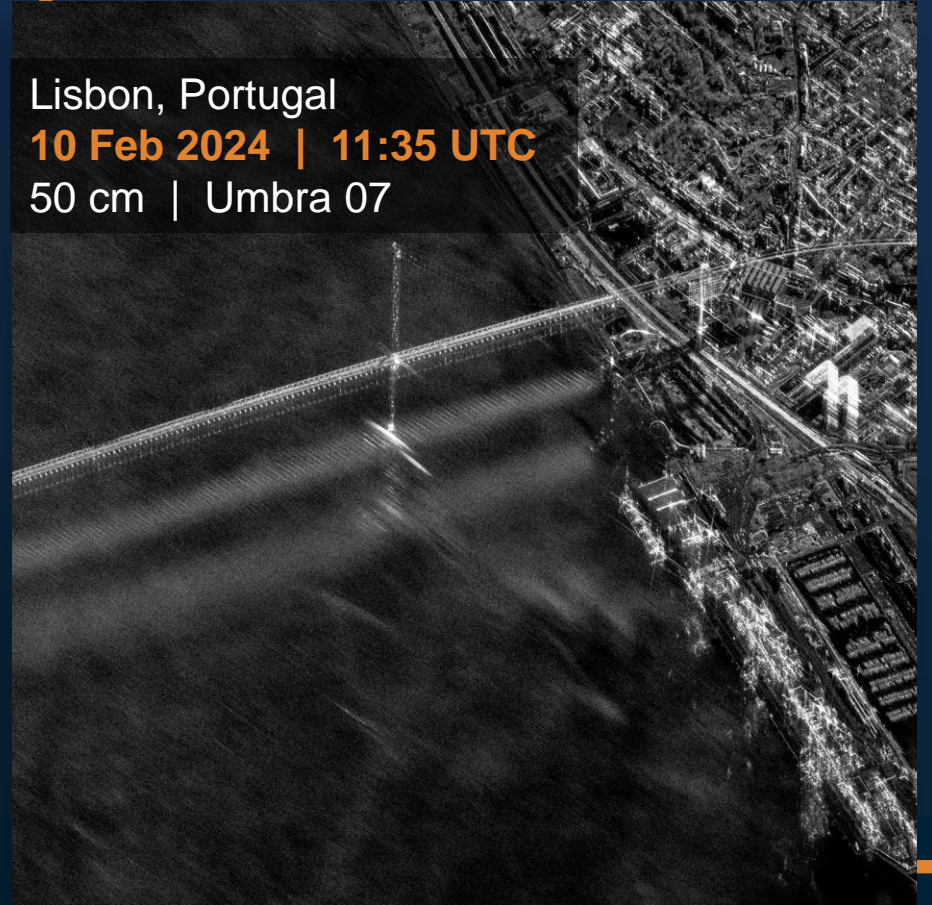
SYNCHRONIZED  
**DOUBLESHOT**

Lisbon, Portugal  
**10 Feb 2024 | 11:25 UTC**  
50 cm | WorldView-2



**10 MIN**  
←-----→

Lisbon, Portugal  
**10 Feb 2024 | 11:35 UTC**  
50 cm | Umbra 07





SYNCHRONIZED  
**DOUBLES**HOT

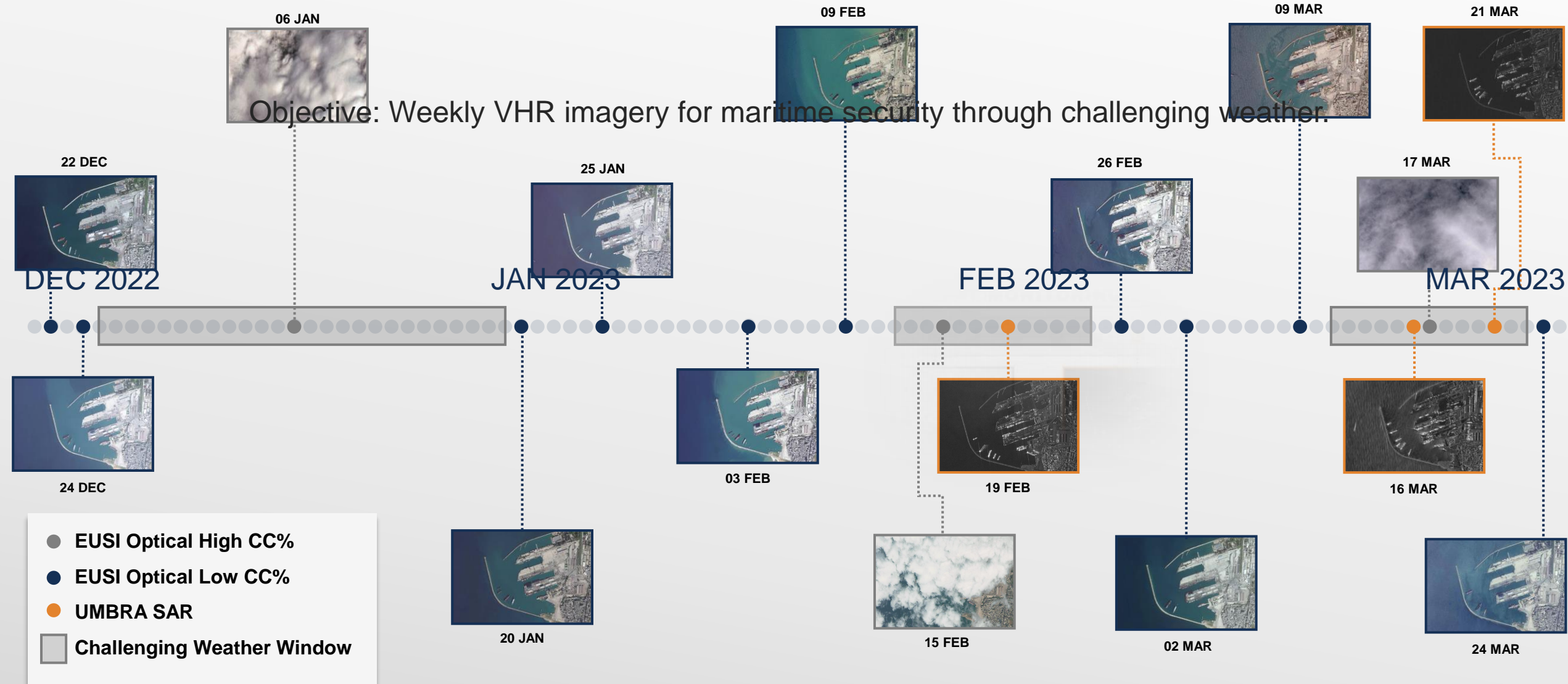


**5 MIN**  
←-----→



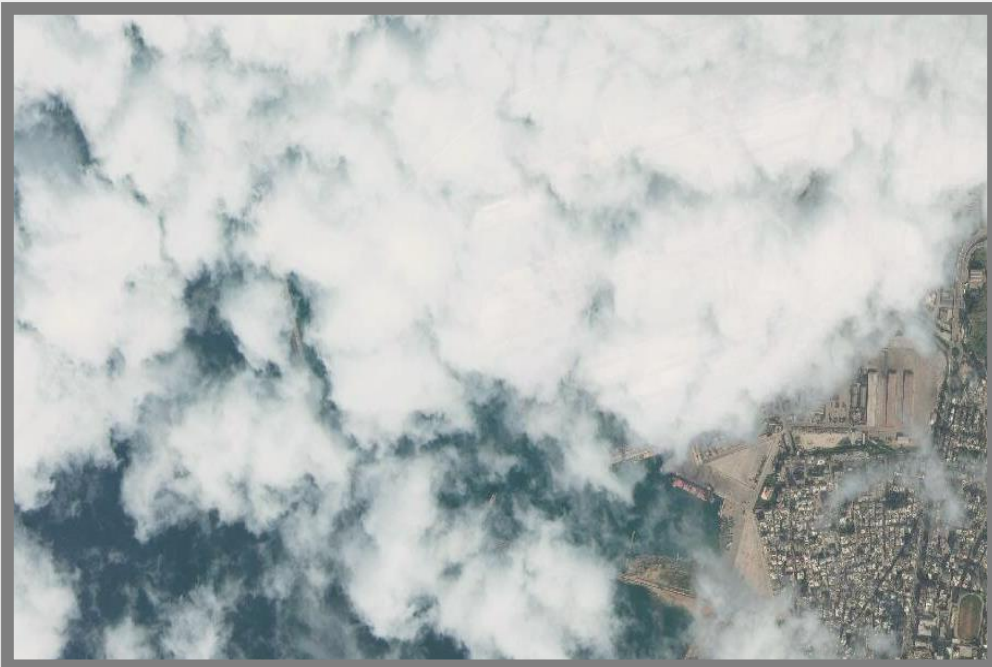
# PERSISTENT MONITORING

Objective: Weekly VHR imagery for maritime security through challenging weather.





# PERSISTENT MONITORING



15 FEB

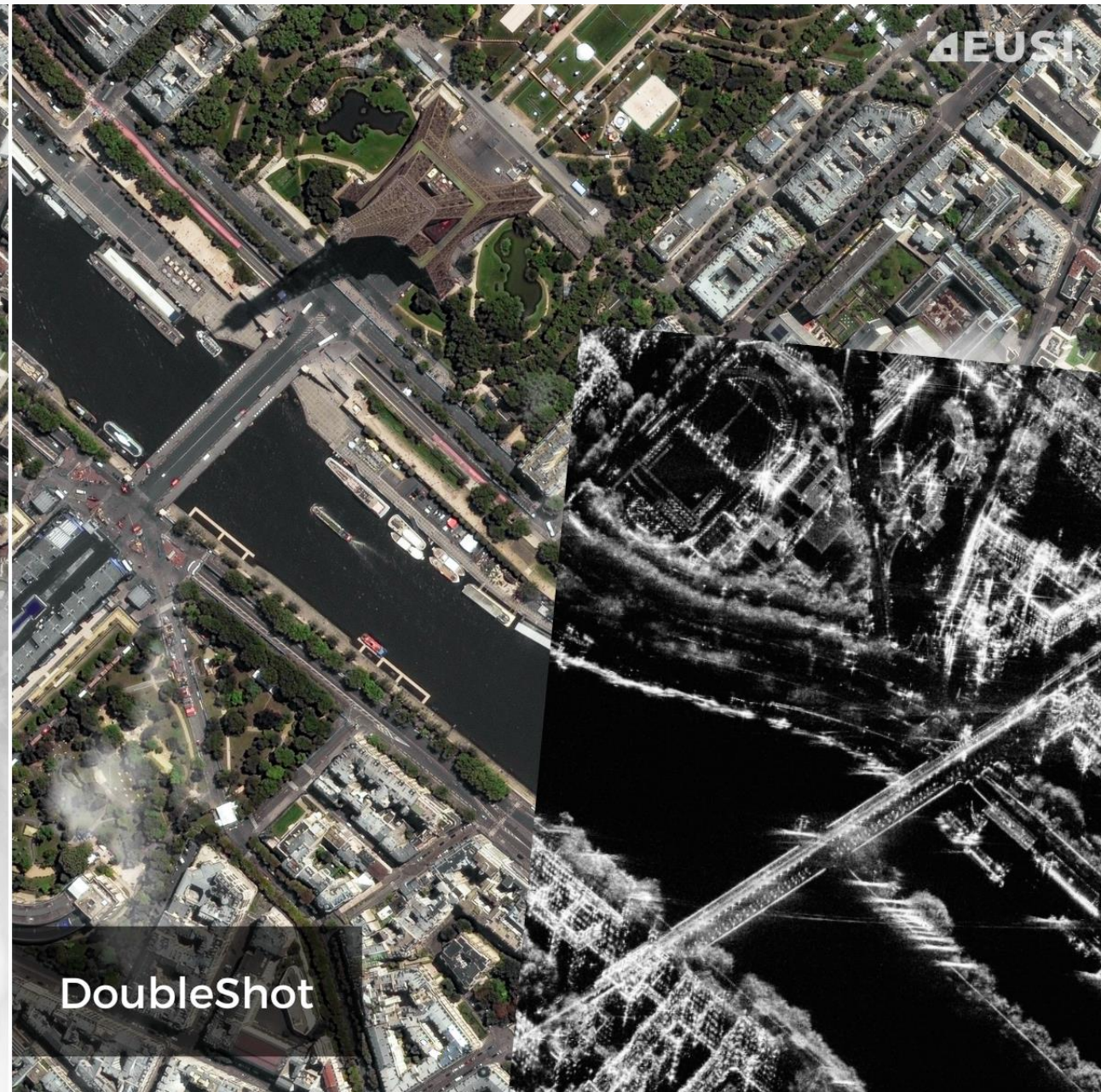


19 FEB





Optical image  
with cloud cover

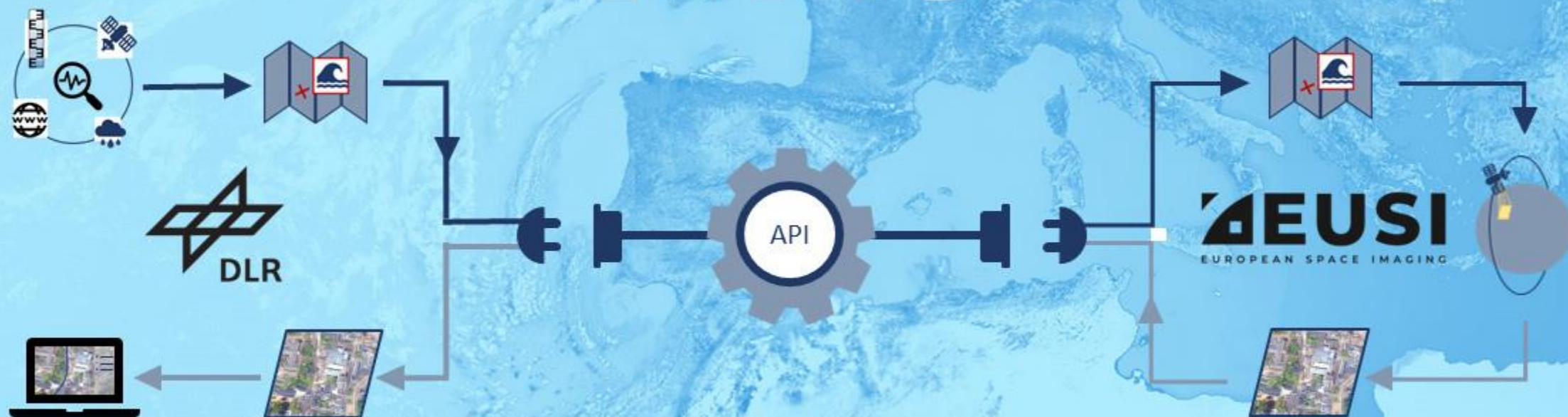


DoubleShot



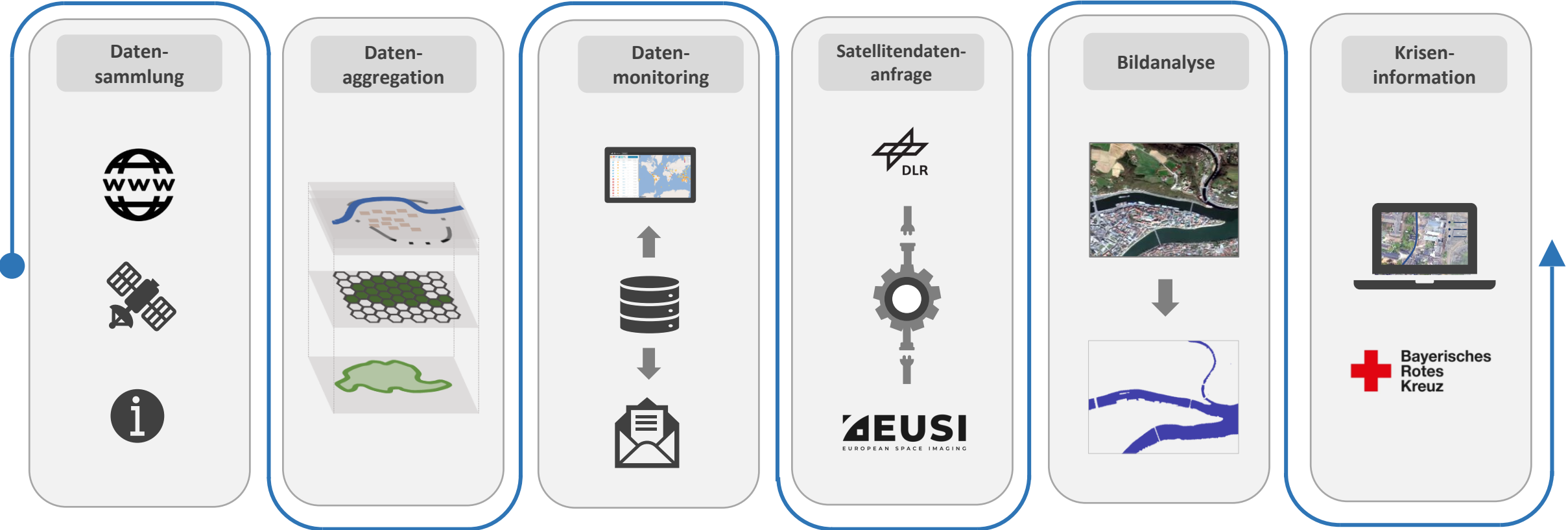
Indicator Monitoring for Early Acquisition of Innovative Satellite Sensors in Natural Disasters

# IFAS

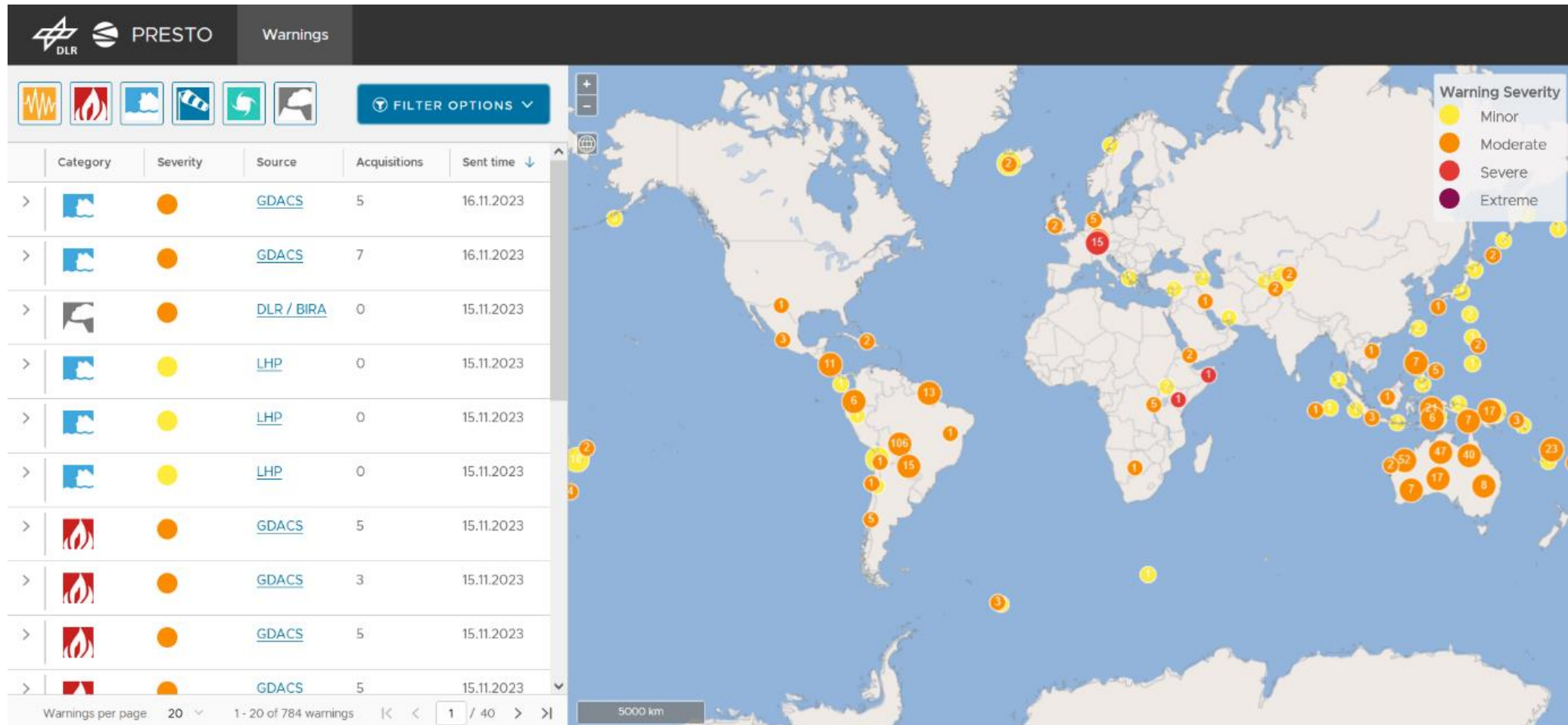




# Indicator Monitoring for Early Acquisition of Innovative Satellite Sensors in Natural Disasters (IFAS)

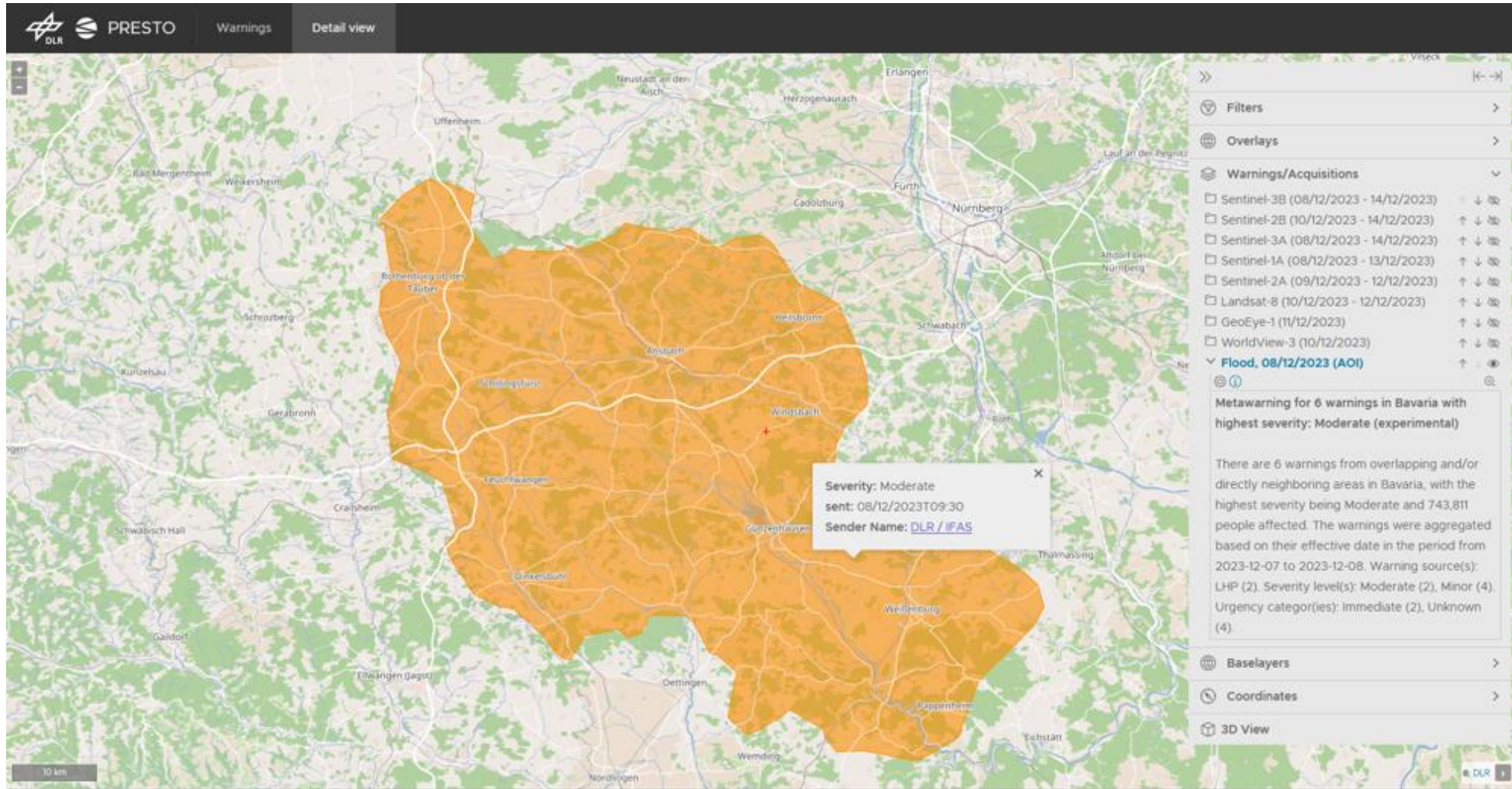


# Data Monitoring



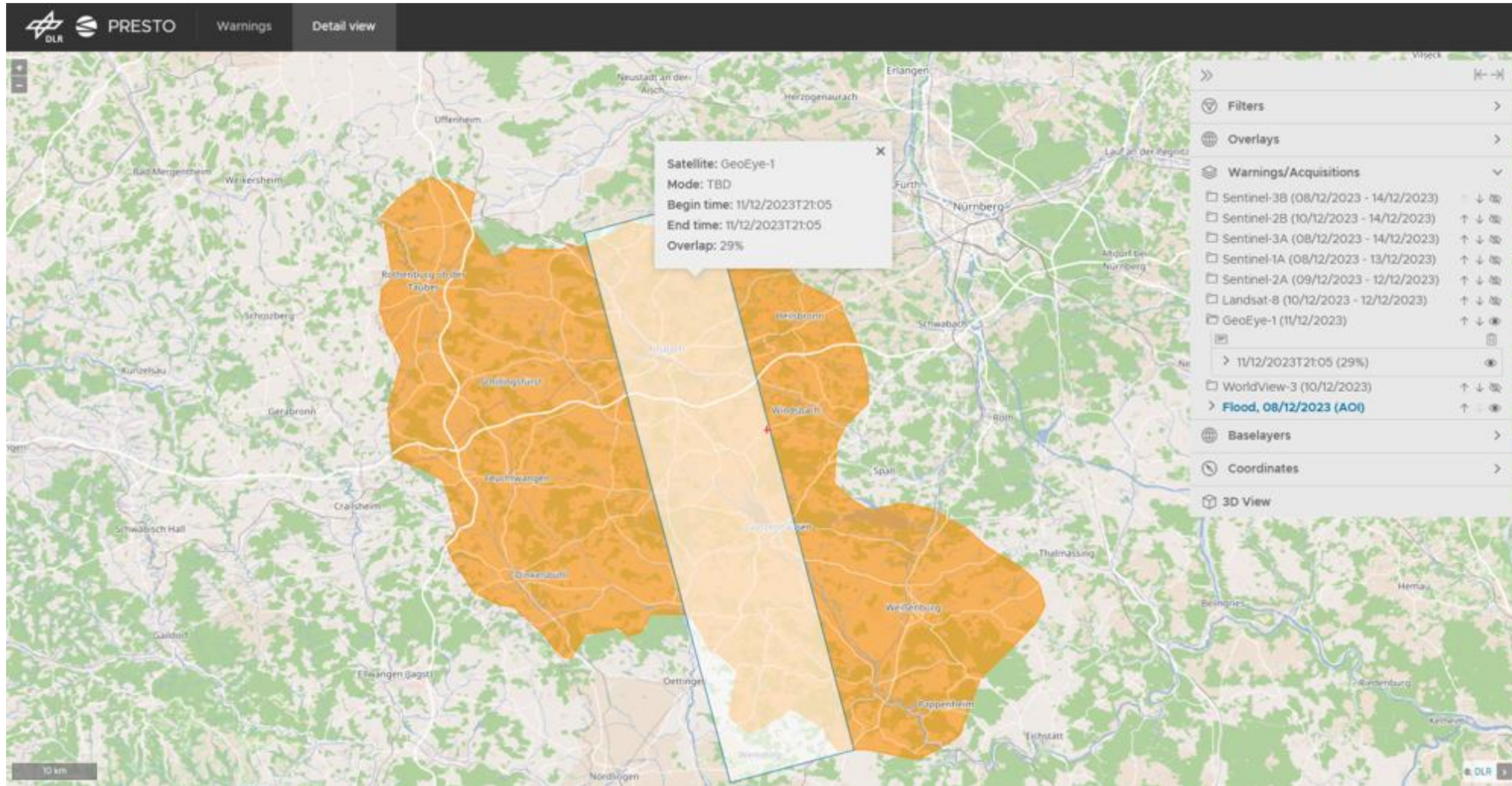


# Data Monitoring





# Data Monitoring



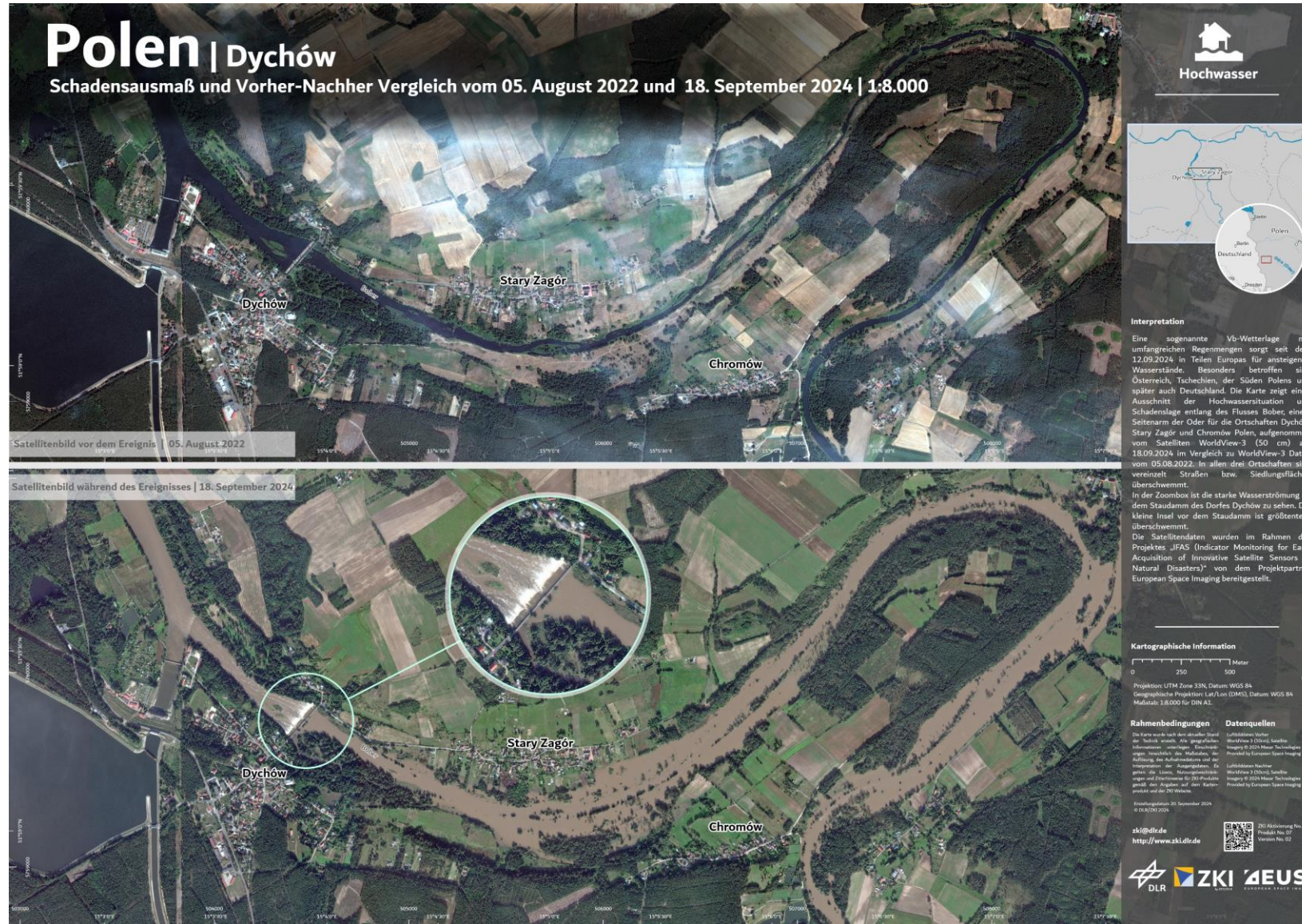


# Überschwemmungen in Ost- und Mitteleuropa 2024





# Überschwemmungen in Ost- und Mitteleuropa 2024





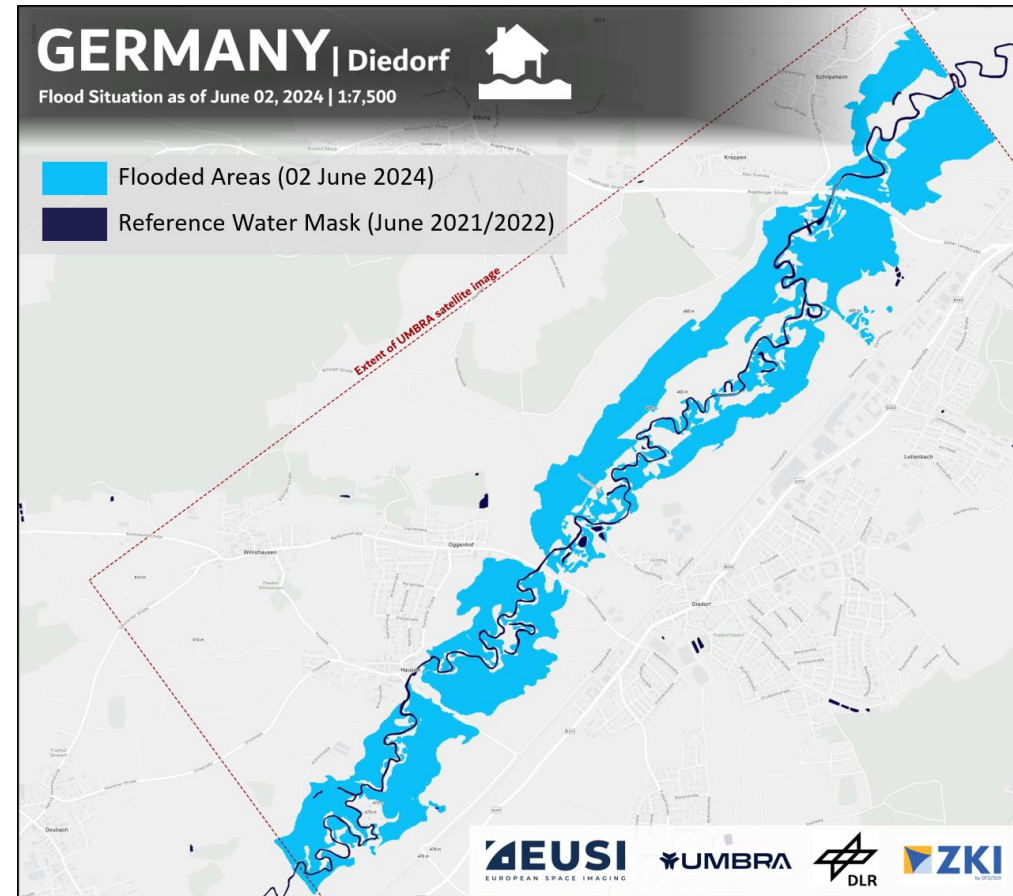
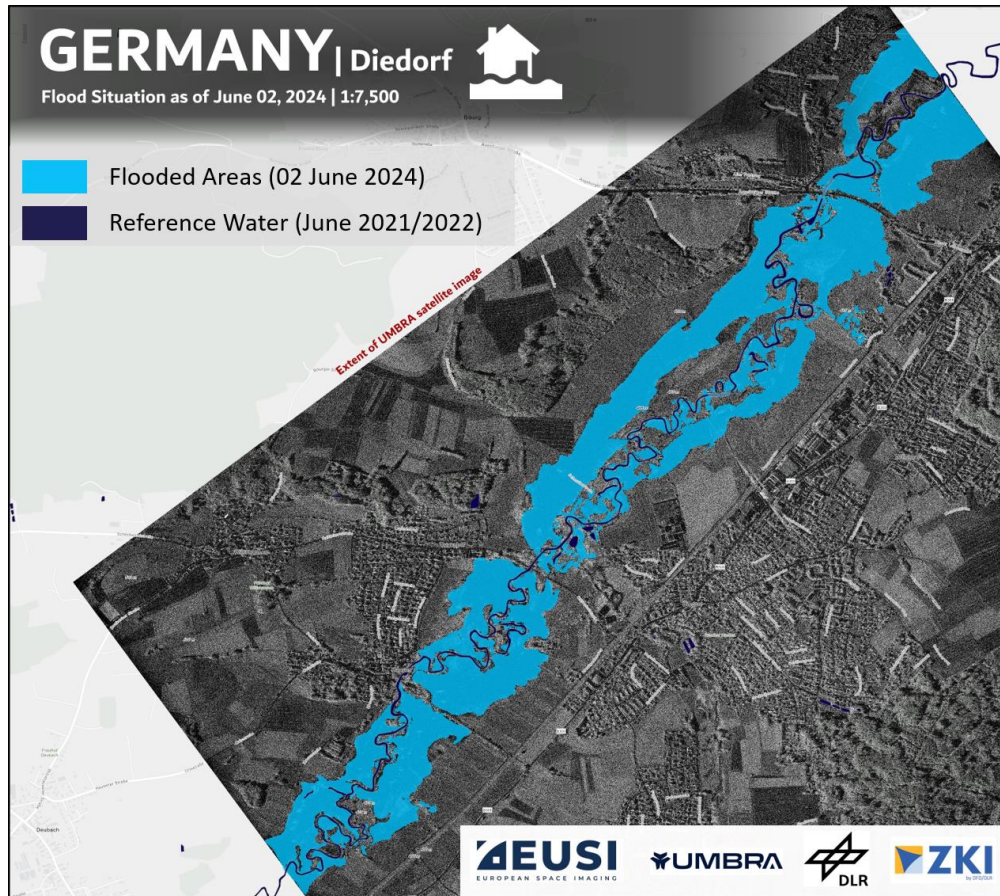
# Überschwemmungen in Ost- und Mitteleuropa 2024

Deggendorf Juni 2024





# Hochwasser Bayern Juni 2024





# IFAS - Indicator Monitoring for Early Acquisition of Innovative Satellite Sensors in Natural Disasters



IFAS

Web Applications ▾

About ▾

Legal Statements



Find address or place

Legend

- OSM POIs
  - hospital
  - police
  - school
- OSM Waterways
  -
- OSM Roads
  -
- OSM Railways
- OSM Buildings
  -

13.424 48.567 Degrees

POWERED BY esri

Esri, Geoland, Intermap, NASA, NGA, USGS | Esri Community Maps Contributors, BVV - geodaten.bayern.de, CUZK, Esri, TomTom, Garmin, Fo...



**Neue Horizonte erschließen:  
WorldView Legion und Umbra  
Radardaten**

---

**Die ultimative Fusion für eine revolutionäre  
Erdbbeobachtung?**